

## Property Details

### TO RENT

A ground floor good size 3 Bed roomed maisonette with direct garden access.

**Viewings are strongly recommended**

**Price:** £950.00

**Ref:** WBPSOR8950

**Location:** NEWBURY

## Why sell with us?

- 1 We are local, personal and passionate about what we do
- 2 We provide a unique, full service offering, all under one roof
- 3 We don't just advertise your home, we aim to sell it!
- 4 We have 20 years experience dealing with property sales and finance
- 5 Fair pricing and no hidden costs



We would like to express how delighted we are with our first home as newly weds.

We cannot recommend WestBerks Properties enough and have been ever since we moved to our friends & family.

We really can't fault the WestBerks Properties team. They are approachable, helpful and thoughtful.

Mr & Mrs D D'Cruz

Available mid-June is this well-proportioned 3 bedroomed maisonette boasting a great layout. There is direct access to an enclosed communal garden and complimented with gas central heating.

Leading off the main hallway there is a good storage cupboard, the 3<sup>rd</sup> bedroom. You then enter a smaller hall leading to the kitchen, reception, of which then leads you to the bathroom and 2 further bedrooms. There are built in wardrobes in bedroom one and the property has a light and airy feel to it.

The property is ideally located for good access to Newbury town centre, Thatcham, M4 and A4 and is looking for a long term tenant.

Reception 14'1 x 14'1    Bedroom 1 14'1 x 10'8    Bedroom 2 12'2 x 8'10    Bedroom 3 9'1 x 8'1

Kitchen 8'6 x 8'7    Bathroom    Hallway

PT DSS

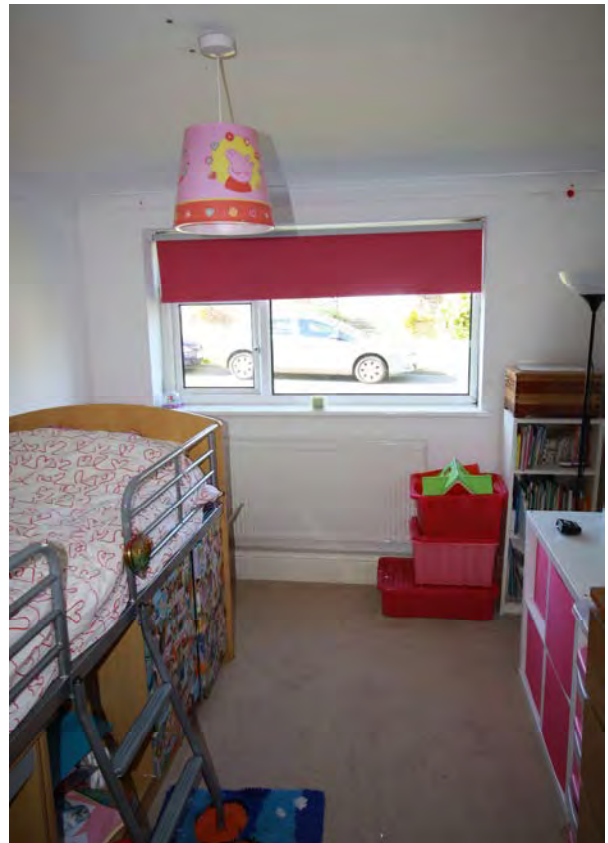
NO DOGS

HA ACCEPTED

**Viewings are highly recommended and can be arranged by contacting WestBerks Properties Lettings agents on [01635 871087](tel:01635871087) or [info@westberksproperties.co.uk](mailto:info@westberksproperties.co.uk)**



**BEDROOM 1**



**BEDROOM 2**



**BATHROOM**

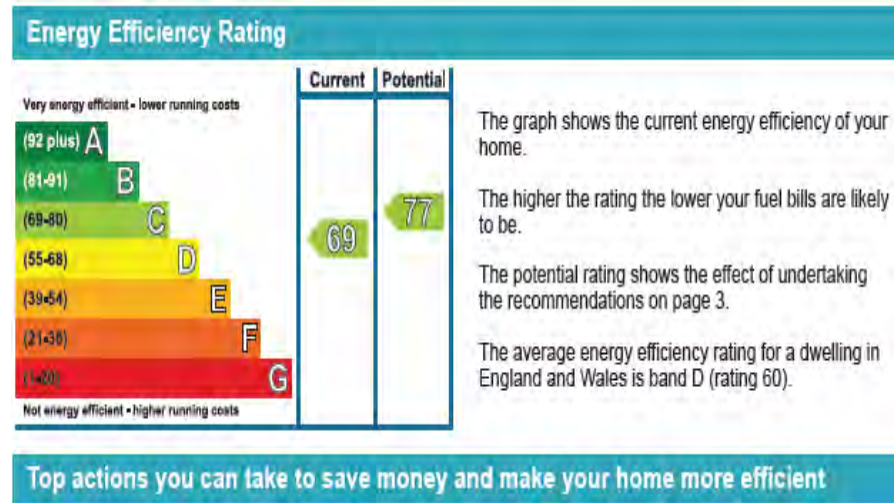




LOUNGE / DINER



KITCHEN



EPC



**BEDROOM 2**



**BATHROOM**



**BEDROOM 1**